

ROEDERERCOLLECTION

CHAMPAGNE LOUIS ROEDERER . CHAMPAGNE DEUTZ
CHÂTEAU DE PEZ . CHÂTEAU PICHON COMTESSE
DELAS FRÈRES . DOMAINES OTT* . RAMOS PINTO
DIAMOND CREEK VINEYARDS . DOMAINE ANDERSON
MERRY EDWARDS WINERY . ROEDERER ESTATE
SCHARFFENBERGER . FONDATION LOUIS ROEDERER
MAISON DESCAVES.MAISONS MARQUES & DOMAINES
HÔTEL CHRISTIANIA VAL D'ISÈRE



"For the past two centuries, the name Louis Roederer has been synonymous with a unique approach to creating and experiencing wine, a unique way of interpreting the moments of shared enjoyment that it procures. It is in this same spirit that several independent "Maisons", renowned for the close relationship they nurture with their Land and their strong desire to protect it, beautify it and share its wonders, have come together to create the Roederer Collection®.

This collection is founded on shared values and a desire to work towards a common goal whilst preserving that which gives us our strength: our independence. This independence forms the basis of everything we do, guides all of our decisions and activity, is nourished by patience and time, and requires us to act not just with curiosity but with resolve. It is our independence that teaches us, whatever our location, to cultivate our vines with respect, awareness and consideration. It encourages us to take a respectful view of hospitality and to create collaborations ("companionships") with renowned artists and future talents through our close relationships with prestigious cultural institutions. This independence represents a loyalty and respect to past and future generations. It is a freedom and a movement that inspire us in our creativity every day. "

Frédéric Rouzaud, Chief Executive Officer



BOTH A FREEDOM AND A MOVEMENT

Collection: derived from the Latin term collectio meaning "the act of collecting" or "that which is collected". Its modern meaning of "bringing together objects with an aesthetic, historical or scientific interest" or "collection of art objects" inspired the name for this federation of independent wine houses which are united by their shared values.

From wine estates, wine négociants and distributors to hospitality venues and a Foundation dedicated to the arts, the Roederer Collection is a group of "Maisons" that share the same vocation whilst remaining committed to their independence. They are united in their understanding of the importance of sharing pleasure which forms the basis of their freedom, movement and creative impetus. They are driven by a vision in which the experience of, and love for, beauty give rise to a contemporary and responsible aesthetic in their craft. To continual growth, they prefer authenticity which requires them to make ambitious choices yet remains the best guarantee of the highest quality.

For the Roederer Collection, sustainable growth lies in a deep respect for the environment as well as the savoir-faire and time required to ensure increasingly higher levels of quality as time goes by. Whilst the hand of Man strives to reveal the most powerful expression of the terroir, his actions have meaning because they also ensure equality and diversity, encourage inclusive initiatives, work to promote an industry with a more responsible mindset and support young talent.

Within the Roederer Collection, each "Maison" represents the story of a meeting with a unique family - a terroir, a heritage and a savoir-faire, sometimes forged over many centuries - which translates into shared values. These values are expressed through decisive undertakings and inform this fundamental freedom to act.

BOLDNESS

BEING FREE TO TAKE BOLD ACTION

Just like the founder of the Louis Roederer Champagne House who acquired his own vineyards in the finest Champagne crus to gain better control over the quality of his wines, the Roederer Collection has retained a freedom of spirit which enables it to be bold, bringing together négociants and accomplished wine producers, daring to combine an outward-looking vision with an intense focus on the local terroir.



HUMILITY

ACTING AS A LINK IN THE CHAIN

Listening to, and being humble in the face of Nature prompted the Roederer Collection companies' to adopt sustainable practices in the vineyards and cellars very early on, focusing on organic growing and certification, whilst also taking a sustainable approach to the management of their premises and facilities. These endeavours will show their true worth over the long term and inspire each generation to act as another link in the chain.

AUTHENTICITY

STANDING UP FOR WHAT YOU BELIEVE IN

The Roederer Collection considers authenticity to be the sum of high standards and respect: the respect shown by those winemakers who constantly challenge their own practices and seek to reveal the terroir through their wines, the respect shown by those producers who invite wine lovers to visit their estates, and the respect shown by those artisans who put their beliefs into practice every single day.



SENSIBILITY

CREATING EMOTION

Appreciating the wonders of a wine, a landscape or a work of art are experiences that stir the emotions and open our eyes to new possibilities. Artists encourage us to experience this sensibility by sharing the depth of their emotions through their work and this is what inspired the Louis Roederer Foundation to support young creators through its sponsorships.



THE WINE *ESTATES*

CHAMPAGNE LOUIS ROEDERER . CHAMPAGNE DEUTZ
CHÂTEAU DE PEZ . CHÂTEAU PICHON COMTESSE
DELAS FRÈRES . DOMAINES OTT* . RAMOS PINTO
DIAMOND CREEK VINEYARDS . DOMAINE ANDERSON
MERRY EDWARDS WINERY . ROEDERER ESTATE
SCHARFFENBERGER

LOUIS ROEDERER . VINEYARDS IN CHAMPAGNE (FRANCE)



WORKING HAND IN HAND WITH NATURE MEANS LIVING WITH HER IN A CREATIVE PARTNERSHIP WHICH, OVER TIME, WILL REVEAL A STYLE, A SPIRIT AND A TASTE, EMBODIED BY THE LOUIS ROEDERER WINES.

Founded in Reims in 1776, Louis Roederer is one of the last great independent family-owned Champagne Houses. It bears the name of the man who, in 1841, put into practice what was an avant-garde vision: to acquire his own vineyards in order to control all the stages of his wine production. Louis Roederer bought vineyard plots in the finest terroirs in Champagne, in the Grands

Crus and Premiers Crus of the Montagne de Reims, Côte des Blancs and Vallée de la Marne, and began to build up a vineyard estate that today covers 242 hectares, half of which are organically certified (the AB label in France). He thus introduced the idea that a great wine is revealed by a constant, sincere and respectful dialogue between the Land and Man.

Forged by time and a chalky soil, the only one of its kind in the world, **Cristal** is the jewel in the crown of the Louis Roederer Champagne House. Created in 1876 at the special request of Tsar Alexander II, this exceptional champagne comes from 45 plots of primarily Grand Cru vines and is only produced in years when the grapes attain perfect maturity.

This powdery, chalky and luminous champagne is slowly constructed using haute couture craft viticulture. Cristal is the ultimate drinking experience, conceived to gradually reveal itself over an extended period of time, becoming more refined with the passing years, acquiring greater depth, a finer texture and more complex aromas.



LOUIS ROEDERER

THE CHAMPAGNES

THE MULTI VINTAGES: Collection, Carte Blanche, Théophile

THE VINTAGE ESTATE WINES: Vintage, Rosé Vintage, Blanc de Blancs Vintage, Brut Nature Blanc & Rosé

CRISTAL: Cristal, Cristal Rosé, Cristal Vinothèque, Cristal Rosé Vinothèque

THE SINGLE VINEYARD STILL WINES

COTEAUX CHAMPENOIS RED: Camille – Charmont, Mareuil-Sur-Ay

COTEAUX CHAMPENOIS WHITE: Camille – Volibarts, Le Mesnil-Sur-Oger

DEUTZ . VINEYARDS IN CHAMPAGNE (FRANCE)



PERPETUATING THE VALUES OF THE LAND,
MAGNIFYING THE TALENT OF MAN, THE CHAMPAGNES
FROM THE DEUTZ CHAMPAGNE HOUSE
TAKE YOU ON A DREAMLIKE JOURNEY
OF TASTE AND REFINEMENT.

Founded in 1838 by William Deutz and Pierre-Hubert Geldermann in Ay, the oldest and most famous cru in the Champagne region, this historic Champagne House became part of the Roederer Collection in 1993. Perpetuating the spirit of the founders, Deutz crafts its wines in the great Champagne tradition. It practices and promotes sustainable viticulture in over

350 hectares of vineyards, 46 hectares of which, located in the finest Champagne crus vineyards, are owned and worked by the Champagne House itself. The elegance, distinction and finesse of the wines with their finely crafted aromas are a reflection of Deutz' constant quest for perfection.

Amour de Deutz takes its name from the bronze cherub that greets the visitor at the entrance to the historic Deutz residence in Ay. For the birth of this vintage champagne, the Champagne fairies first have to ensure that the year's weather conditions are excellent and then

wave their magic wand over the cradle of the Chardonnay. Respectful vineyard management and then the subtle art of blending will reveal "Harmony", which, of course, goes hand in glove with "Love" (Amour).



CHAMPAGNE DEUTZ

THE MULTI VINTAGES: Deutz Brut Classic, Deutz Brut Rosé, Deutz Demi-Sec & Extra Brut

THE VINTAGES: Deutz Brut Vintage, Deutz Brut Rosé Vintage, Deutz Brut Blanc De Blancs Vintage & Deutz Demi-Sec

THE SINGLE VINEYARD CHAMPAGNES: Hommage à William Deutz "Côte Glacière" & "Meurtet"

PRESTIGE CUVÉES: Amour De Deutz, Amour De Deutz Rosé & William Deutz

AMOUR DE DEUTZ

THE COLLECTOR'S METHUSELAH:

Limited editions in individually numbered bottles (365 Methuselaha per vintage, 366 if the year allows)

CHÂTEAU DE PEZ . VINEYARDS IN SAINT-ESTÈPHE (FRANCE)

WORKING WITH PASSION TO REVEAL,
WITH EACH VINTAGE,
AN EXCEPTIONAL TERROIR WORTHY
OF THE MÉDOC GRANDS CRUS CLASSÉS.



Dating back to the 15th century, Château de Pez is one of the oldest wine estates in Saint-Estèphe. It acquired its reputation in the 16th century when it was owned by the Pontac family, who also built Château Haut Brion. Initially a hunting lodge, the Domaine de Pez developed its winegrowing vocation over time. In the 18th century, the property's architecture was

transformed and assumed the appearance of a château. The vineyards, which extend over 48 hectares to the west of the "commune" of Saint-Estèphe, are mainly in a single block of land located on a plateau - gravelly soil resting over a clay-limestone base – set out in a series of perfectly exposed hillocks.

Thanks to a long, painstaking restructuring of the vineyards and the construction of a new vat house, a combination of modernity and tradition, **Château de Pez** is now experiencing something of a revival. This great Saint-Estèphe wine is remarkable for its aromatic complexity, finesse and perfectly balanced structure. Its power, characteristic of the great wines of this terroir, is combined with silky tannins, creating a perfect harmony between tension and refinement.



CHÂTEAU DE PEZ

CHÂTEAU DE PEZ, The First Wine
2nd de Pez, the Second Wine

CHÂTEAU PICHON LONGUEVILLE COMTESSE DE LALANDE . VINEYARDS IN PAUILLAC (FRANCE)



PICHON LONGUEVILLE COMTESSE DE LALANDE
ASPIRES TO BUILD ON THE WORK OF THE PAST
TO CRAFT AN UNFORGETTABLE
AND TIMELESS WINE.

Founded in 1689 by Pierre de Rauzan, the Pichon-Longueville family acquired the property in 1694. In 1850, Virginie de Pichon Longueville (the Comtesse de Lalande) and her sisters inherited 30 hectares of one of the finest vineyards in the Bordeaux region. A pioneer within the male-dominated wine world, she worked tirelessly to forge the reputation of her wine and the chateau that would bear her name.

In 1855, Château Pichon Longueville Comtesse de Lalande acceded to the rank of Second Grand Cru Classé. It boasts a unique terroir covering 102 hectares in a perfect location on the banks of the Gironde estuary. Here, the Cabernet-Sauvignon is king, blending perfectly with Merlot, Cabernet Franc and Petit Verdot to create complex and distinguished Pauillac "grands vins".

Château Pichon Longueville Comtesse de Lalande is a unique wine, born from a balance between the the power of Pauillac and the sensuality of Comtesse. Endless floral, fruity and spicy nuances reveal an enticing complexity; the wines are clean and refined with a luscious saline finish drawn out by precise yet silky-smooth tannins.



CHÂTEAU PICHON LONGUEVILLE COMTESSE DE LALANDE

PAUILLAC, 2nd GRAND CRU CLASSÉ:
Château Pichon Longueville Comtesse De Lalande,
the First Wine

PAUILLAC: Pichon Comtesse Réserve,
the Second Wine

DELAS FRÈRES . VINEYARDS IN THE RHÔNE VALLEY (FRANCE)

PUTTING WINE AT THE HEART OF THE TERROIR.
PERPETUATING AND ENHANCING ITS EXPRESSION
IN WHICH THE SOUL OF THE WINEGROWER
AND THAT OF THE WINEMAKER ARE JOINED
TOGETHER IN A SINGLE-MINDED PURSUIT
OF QUALITY AND AUTHENTICITY.



Founded in Tournon-sur-Rhône in 1835, Delas Frères is proud of its winegrowing heritage and its place among the Rhône Valley's great négociant houses. Its new home with its impressive winery in Tain l'Hermitage is a stone's throw from the great terroirs and famous plots that make up the Domaine Delas vineyards. The vineyard estate covers nearly 30 hectares in the Hermitage, Saint-Joseph and Crozes-Hermitage AOCs. Based on its respect for the land and fundamental human values, Delas Frères is careful to

preserve the symbiosis that, through its open dialogue and the high standards it sets with its growers, enables it to produce magnificent wines from other AOCs such as Condrieu, Cornas and Côte-Rôtie. The Delas range also includes some Southern Rhône AOC wines such as Châteauneuf-du-Pape, Gigondas, Vacqueyras, Ventoux, Grignan-les-Adhémar and other Côtes du Rhône.

Ligne de Crête, located adjacent to the iconic Les Bessards terroir, reflects the nobility of

the Syrah grape grown on the majestic granite terraces of Hermitage. It is the fruit of the careful observation and study that typify the "Delas spirit". This single-vineyard wine is carefully and traditionally vinified, before being aged in oak barrels selected according to the

characteristics of each vintage. The elegance, complexity and precision of its aromatic range and the perfect balance of its soft, fine tannic structure are the hallmarks of this noble wine with excellent cellar ageing potential.



DELAS FRÈRES

HERMITAGE: Ligne De Crête*, Les Bessards*,
Domaine Des Tourettes (Red & White)**

CÔTE-RÔTIE: La Landonne*,
Seigneur De Maugiron

CONDRIEU: Clos-Boucher*, La Galopine

CROZES-HERMITAGE: Domaine Des Grands
Chemins**, Le Clos*, Les Launes (Red & White)

SAINTE-JOSEPH: Sainte-Épine*,
François De Tournon, Les Challoys
(Red & White)

CORNAS: Chante Perdrix

CHÂTEAUNEUF-DU-PAPE: Haute Pierre

VACQUEYRAS: Domaine Des Genêts*

GIGONDAS: Les Reinages

CÔTES-DU-RHÔNE: Saint-Esprit
(Red, White & Rosé)

GRIGNAN-LES-ADHÉMAR

VENTOUX TAVEL: La Comballe

MUSCAT DE BEAUMES-DE-VENISE:
La Pastourelle

* single vineyard wines

** estate wines

DOMAINES OTT* . VINEYARDS IN PROVENCE (FRANCE)



"TASTING THE COLOURS OF TIME" MEANS CELEBRATING THE VARIOUS DIMENSIONS AT PLAY IN THE DOMAINES OTT* WINES, THE RESULT OF A RESPECT FOR NATURE AND THE LONG, PAINSTAKING WORK REQUIRED TO BRING OUT THE WINES' FINEST EXPRESSION.

The story of Domaines Ott* began in 1896 when Marcel Ott fell in love with the Provence region and decided to replant the noble grape varieties in the area in order to craft fine wines worthy of a tradition dating back to Greco-Roman times. Almost 130 years later, the three Ott domains can still be found in Provence: Château de Selle in Taradeau, Clos Mireille in La Londe-les-Maures and Château Romassan in Castellet. Ott's rosé, white and red wines from the Côtes de Provence and

Bandol AOCs, are the expression of three very different terroirs. Jean-Francois Ott, the fourth generation at the estates' helm, continues to cultivate the vineyards with finesse and precision, respectful of Nature and Her rhythms. He and his team's work, which is based on many years of experience and patient observation, has forged the special character and international reputation of Domaines Ott* over the years.

Étoile – a name that evokes the pioneering spirit of the company's founder – brings together and showcases the terroirs of Bandol and the Côtes de Provence in an unexpected yet exciting wine. Each year, the bright, explosive fruit takes the wine's

aromatic depth further with an exquisite pulp and mouthfeel. Richness and power come together and take on a new dimension, bound together in a newfound intensity, freshness and seductive opulence.



DOMAINES OTT*

THE ESTATE WINES

CÔTES DE PROVENCE: Château de Selle Rosé & Red, Clos Mireille Rosé & White

BANDOL: Château Romassan Rosé & Red

A BLEND OF THE THREE OTT ESTATES: Étoile Rosé

THE SIGNATURE WINE

BY OTT Rosé, Red & White

RAMOS PINTO . VINEYARDS IN THE DOURO (PORTUGAL)

A GOOD DISPOSITION IS INVINCIBLE:
TO CONTINUOUSLY IMPROVE AND CRAFT
THE FINEST PORT AND DOURO WINES
PRESTIGE AND INNOVATION REMAIN INSEPARABLE



Ramos Pinto produces wines of exceptional quality that are sustainably produced and in harmony with Nature. This unique approach is built on two pillars: innovation and respect for tradition. Founded in Oporto in 1880 to produce fine wines in the Douro Valley - a region whose vineyard landscape is listed as a Unesco World Heritage Site - this company is famed for its in-depth knowledge of the terroir and its production and selection of

the finest grapes. From its 350 hectares of vineyards spread over four "quintas" (Bom Retiro, Urtiga, Bon Ares and Ervamoira), the company has been producing Ports since its creation and, more recently, Douro wines, the designation of origin that it helped to launch around the world.

Quinta Do Bom Retiro 20-Year-Old Tawny is a blended Port that reveals a complex nose of dried nuts (almonds, hazelnuts) and caramel aromas that are accentuated on the palate by a generous persistence. In answer to this fresh, sweet harmony, **Quinta de Ervamoira** is a red Douro wine whose infinite aromatic

complexity of lush red fruit (strawberries and raspberries) is beautifully complemented by spicy and subtle flavours of orange blossom. Both wines show remarkable elegance and length on the palate.



RAMOS PINTO

THE PORTS

LÁGRIMA, WHITE, RUBY, TAWNY

ADRIANO WHITE RESERVA,
COLLECTOR RESERVA, ADRIANO RESERVA

10 YEAR OLD TAWNY QUINTA DE ERVAMOIRA,
20 YEAR OLD TAWNY QUINTA DO BOM RETIRO,
30 YEAR OLD TAWNY

LATE BOTTLED VINTAGE (LBV) & VINTAGE

THE DOURO WINES

DUAS QUINTAS White & Red

DUAS QUINTAS RESERVA White & Red

QUINTA DE ERVAMOIRA Red

ROEDERER ESTATE . VINEYARDS IN MENDOCINO (CALIFORNIA)



THIS YOUNG SPARKLING WINE COMPANY
BENEFITS FROM LOUIS ROEDERER'S TWO
CENTURIES OF TRADITION,
EXCELLENCE AND KNOW-HOW IN THE
CRAFTING OF FINE CHAMPAGNES.

Founded in 1982 by Jean-Claude Rouzaud, Roederer Estate is nestled in the cool, misty Anderson Valley lying in Mendocino County on the U.S. West Coast. As the California outpost of Champagne Louis Roederer, the estate builds upon a centuries-old tradition of champagne-making. With 180 hectares of vineyards, it is among the very few American

sparkling wine houses to vinify only its own grapes. Roederer's unique style, based on two principles – complete ownership and control of its vineyards and the addition of oak-aged reserve wines -, is expressed in multi-vintage wines and also, in exceptional years, vintage wines crafted from pre-selected grapes.

Brut L'Ermitage reveals a pale-yellow hue and a fine, noble nose of unexpected intensity, a blend of verbena, citrus and brioche notes. The wine is lively on entry to the palate and then shows great balance confirmed by lovely aromas of white fruit and lemon, revealing depth and real complexity.



ROEDERER ESTATE

BRUT NV
BRUT ROSÉ NV

L'ERMITAGE BRUT VINTAGE
L'ERMITAGE ROSÉ VINTAGE

DOMAINE ANDERSON . VINEYARDS IN MENDOCINO (CALIFORNIA)



FOR DOMAINE ANDERSON, RESPECTING THE NATURAL HARMONY OF THE VINEYARDS MEANS USING SUSTAINABLE AND BIODYNAMIC GROWING PRACTICES.

Domaine Anderson is nestled in the breathtaking, fog-cooled hillside and mountain terrain of Northern California's Anderson Valley. The cooling marine layer that is characteristic of this region provides ideal conditions for the cultivation of Pinot noir and Chardonnay grapes. Because of these temperature ranges - reminiscent of the Champagne region - the Rouzard family decided that this would be the perfect region in which to grow high-quality Pinot noir and

Chardonnay grapes. The wines are crafted with precision and care to express the uniqueness of the Anderson Valley terroir. The wines made their debut with the 2012 vintage.

Our flagship vineyard – the **Dach** Vineyard, produces outstanding fruit from 8 hectares of biodynamic grapes. It is a mosaic of parcels planted with 12 different heritage and Dijon clones. It produces a wine that is

dark red with shades of purple. The aromas are of concentrated black cherry, bramble and plums with hints of fresh tilled soil and oak. Intense flavours mirror the aroma with cherry, blackberry and a whiff of cool humid creekside underbrush. Beautiful texture with powerful and silky tannins.



DOMAINE ANDERSON

PINOT NOIR ESTATE

CHARDONNAY ESTATE

PINOT NOIR SINGLE VINEYARD WINES:

Dach, Walraven, Pinoli

CHARDONNAY SINGLE VINEYARD WINES:

Dach, Walraven

SCHARFFENBERGER CELLARS . VINEYARDS IN MENDOCINO (CALIFORNIA)



UNCOMPROMISING QUALITY REQUIRES AN ORIGINAL AND RESPECTFUL WINEGROWING AND WINEMAKING ETHOS, COMBINING A PRACTICAL CHOICE OF GRAPE VARIETIES WITH RESPECT FOR THE TERROIR.

Founded by John Scharffenberger in 1981, Schaffenberg Cellars is situated in the heart of Anderson Valley in California's Mendocino County, one of the best sparkling wine appellations in the United States. In addition to the sunshine provided by a Mediterranean-type climate, the vineyards benefit from cooler temperatures due to the proximity of the Pacific Ocean and the deep soils found in this particularly sheltered

valley. The wines are crafted from grapes originating from Scharffenberger Cellars' own 50 hectares as well as selected vineyards throughout the appellation. The white and rosé sparkling wines are crafted using the "Méthode Traditionnelle" process (formerly known as "Méthode Champenoise"), whereby they undergo a second fermentation in the bottle before being riddled and disgorged.

To make Scharffenberger **Rosé Excellence NV**, about 5% of still Pinot noir is blended into the base cuvée. The still wine is vinified differently from traditional table Pinot noir. It is a light, fruity, low-tannin wine made to avoid any interfering "red wine character".

The result is a Brut NV with a pale salmon hue, notes of crushed raspberries and fresh strawberries on a cream-covered pastry base. The flavours are layered, round, fresh, fruity and long.



SCHARFFENBERGER
BRUT EXCELLENCE NV
BRUT EXCELLENCE ROSÉ NV
BLANC DE BLANCS VINTAGE
CREMANT NV

MERRY EDWARDS WINERY . VINEYARDS IN SONOMA (CALIFORNIA)

MERRY EDWARDS' PIONEERING AND INNOVATIVE VISION PAVED A PATH FOR PINOT NOIRS THAT REFLECT THE AUTHENTIC CHARACTER OF A PRESTIGIOUS TERROIR IN THE HEART OF THE RUSSIAN RIVER VALLEY APPELLATION. HER CONTRIBUTIONS ALSO INCLUDE A SAUVIGNON BLANC FROM THE APPELLATION THAT IS AMONG THE MOST LAUDED AND SOUGHT AFTER IN THE UNITED STATES.



Founded in 1997 by namesake Merry Edwards, a winegrower and winemaker, Merry Edwards Winery began as a dream to craft terroir-driven, single-vineyard Pinot noirs from the Russian River Valley in Sonoma County. Today, the winery continues this pursuit under the winemaking hand of Heidi Von Der Mehden with the philosophy that Pinot noirs can

express immense depth, elegant structure and exceptional longevity when grown in the right place. The winery works 40 hectares of sustainably grown estate vineyards throughout the Russian River Valley including the flagship estate Meredith Vineyard. Visitors can enjoy tutored tastings at the winery located in Sebastopol, California.

The nose on the flagship wine **Meredith Estate** begins with inviting notes of vanilla cream, fresh blackberries, baking spices and plums. Elegant and refined on the palate, this Estate bottling has a purity of fruit and silky, well-integrated tannins. Brooding black fruit notes

and bittersweet chocolate intertwine with a core of well-balanced acidity. The finish is long, bright and mouthwatering – an effortless marriage of intensity and grace.



MERRY EDWARDS WINERY

PINOT NOIR SINGLE VINEYARD WINES: Meredith Estate, Coopersmith, Georganne, Olivet Lane, Warrens' Hill
CHARDONNAY SINGLE VINEYARD WINES: Olivet Lane
APPELLATION WINES: Sauvignon blanc & Pinot noir

DIAMOND CREEK VINEYARDS . VINEYARDS IN THE NAPA VALLEY (CALIFORNIA)



LAND IS IMMUTABLE. HOW HUMANS INTERACT WITH IT GIVES IT A VOICE. AT DIAMOND CREEK OUR GOAL IS SIMPLY THIS :

TO MAINTAIN THIS PURITY OF PLACE AND ENHANCE IT AS WE CAN, ALLOWING THE LAND TO CONTINUE TO SPEAK FOR ITSELF.

In 1968, visionary Al Brounstein defied modern conventions and planted Bordeaux varietals in the secluded Diamond Mountain AVA. Today, Diamond Creek Vineyards is known as an iconic Napa Valley estate with a long history of making some of California's most revered Single-Vineyard Cabernet-Sauvignons that changed the destiny of Napa Valley wines. True to the mission of its founders, the winery has never veered from its path of creating wines that express the unique terroirs that

coexist on this geologically diverse yet relatively small area of land. Today we carry on this tradition, committed to preserving Diamond Creek's long celebration of estate-grown Cabernet-Sauvignon while nurturing the property and its wines to even higher expressions of quality and singularity.

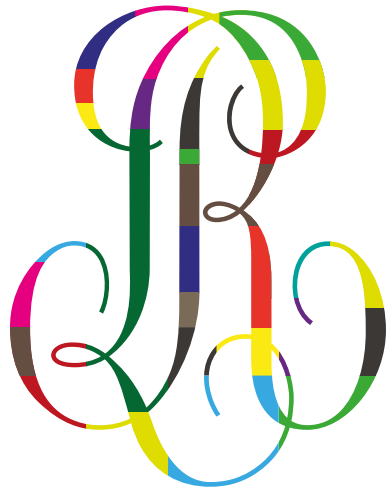
Sitting in one of the estate's warmer microclimates, the **Volcanic Hill** site typically produces Diamond Creek's most powerful and long-lived wine, usually the last wine to be tasted in the line-up of Diamond Creek's

Cabernet-Sauvignons. This is a full-bodied Cabernet with ripe berry fruit, smoky richness, scented earth and elegant tannins that make the wine alluring in youth but eminently age-worthy.



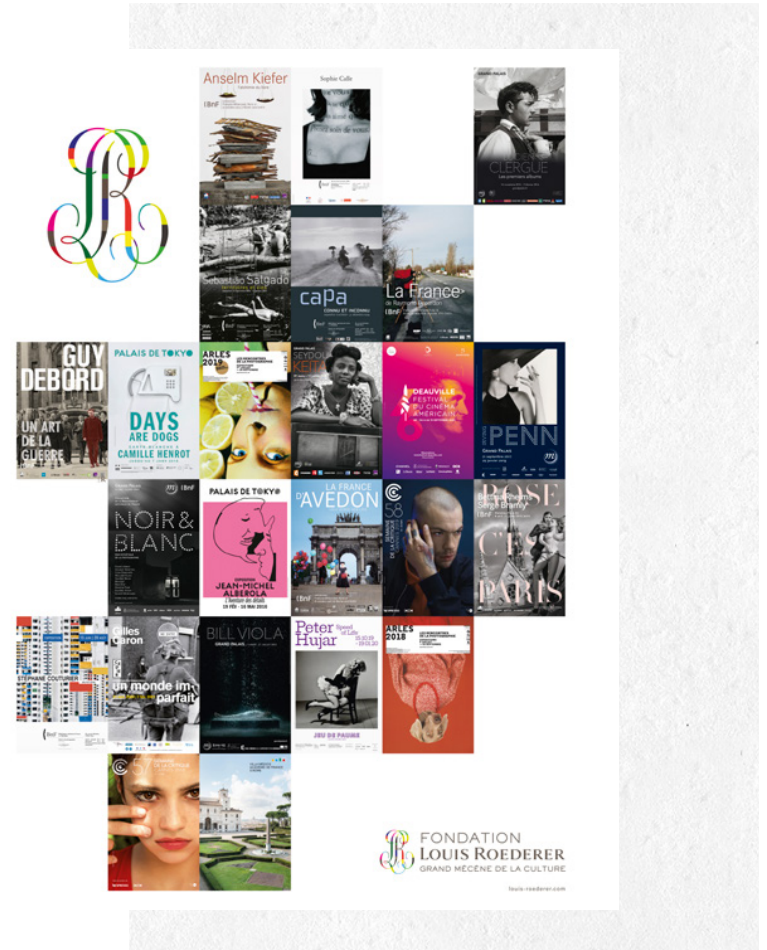
DIAMOND CREEK
VOLCANIC HILL
SINGLE VINEYARD WINE
RED ROCK TERRACE
SINGLE VINEYARD WINE
GRAVELLY MEADOW
SINGLE VINEYARD WINE
LAKE
SINGLE VINEYARD WINE
THREE VINEYARD BLEND

THE LOUIS ROEDERER FOUNDATION



BUILDING THE WINES' INTANGIBLE VALUE,
INSPIRING THE WORK OF EVERYONE
IN THE COMPANY.

For the Roederer Collection, the desire to love, serve and humbly reveal the beauty of the Land is reflected in a quest for the finest accomplishments that takes direct inspiration from the world of art, particularly if we consider that the movement that inspires each of these family-owned estates is part of a long process of creation. This close association with the world of art and this relentless quest for beauty have seen Louis Roederer serve as patron for the Bibliothèque nationale de France (BnF) promoting its photography assets since 2003. Named "Great Patron of Culture" in 2010 and 2011, it created the Louis Roederer Foundation with the aim of structuring and perpetuating its sponsorship activity.



Over the years the Foundation has built creative partnerships with cultural institutions such as the BnF, the Grand Palais and the Villa Médicis whilst striving to support young talent which it does through the BnF's photographic research grant, the Prix Découverte at the Rencontres d'Arles photography festival, the Prix de la Révélation for the Semaine de la Critique at the

Cannes Film Festival and the Deauville American Film Festival.

Such a rich exchange of images and words, concepts and forms, as well as the low-key manner in which it is promoted, provides a platform for contemporary art and informs the Roederer Collection in its strategy and actions.

DISTRIBUTING EXCEPTIONAL WINES



In the same way that Louis Roederer, when he founded his Champagne House, made the pioneering decision to acquire his own vineyards in order to remain independent and gain complete control over the production of his wines, the Roederer Collection has established its own distribution channels. This strategy is part of an approach of being close to the consumer while ensuring the integrity of the product. It also gives us better control over the quality of the distribution network and sales practices in over a hundred countries.

The Roederer Collection's wines are distributed

by CHAMPAGNE LOUIS ROEDERER in mainland France and Monaco, by RAMOS PINTO in Portugal and by the subsidiaries of MAISONS MARQUES ET DOMAINES in the United States, United Kingdom and Switzerland.

In the German and Italian markets, the Roederer Collection holds shares in SCHLUMBERGER and SAGNA. In other markets it has built a network of high-quality distributors, often family-owned companies, who share its values and with whom close partnerships have been forged over several generations.



MAISON DESCAVES, a négociant company specialising in the sale of Bordeaux fine wines, many of which are international icons, is one of the most influential names on the Bordeaux market. It handles the distribution of Château Pichon Longueville Comtesse de Lalande alongside other top wines such as Petrus.

CHAMPAGNE DEUTZ markets its own champagnes, as well as the Delas Frères wines, through a complementary distribution network.

HOSPITALITY THE ROEDERER COLLECTION WAY



A VIRTUOUS ECOSYSTEM DESIGNED
TO BRING TOGETHER TERROIRS,
WINES AND LEISURE ACTIVITIES.



In addition to the marketing of its wines, the Roederer Collection has developed the hospitality side of its businesses, particularly on its wine estates. Reaffirming its desire to combine talents, it is thus creating a virtuous ecosystem designed to bring together terroirs, wines and leisure activities, thereby ensuring a better sharing and flow of savoir-faire. Whether in Reims or Provence, Tain l'Hermitage or Bordeaux, Portugal or California, those with a passion and interest in wine are therefore able to get a real sense of a wine and a terroir,

understand it from within and fully immerse themselves in its history whilst experiencing the beauty of Nature firsthand.

For this reason, the prestigious Hotel Christiania in Val d'Isère became part of the Roederer Collection. The acquisition of this historic institution, which is in the process of undergoing a complete renovation, is another example of the Roederer Collection's entrepreneurial vision for the hospitality sector, a vision of luxury combined with authenticity.

ROEDERER COLLECTION :

*A PLEDGE FOR THE FUTURE
ENABLING THE EXPRESSION
OF ITS TERROIRS*



Living, breathing soils worked with patience, high standards and a deep respect for an artisan savoir-faire that draws on multiple influences, diversity, an openness to the world and to others, generosity and sharing... these are the guiding principles of the environmental, societal and cultural pledges made by the Roederer Collection.

This respect for the environment, the living world, the planet, and the men and women who inhabit it, is a reflection not only of our commitment to passing on a heritage to future generations but also a condition for the expression of the identity of the terroirs and regions in which our "Maisons" are rooted.



RESPECTING THE LIVING ENVIRONMENT

As a pioneer in the use of eco-friendly viticulture, the Roederer Collection has been working towards **organic growing** certification for its wine estates in France and Portugal (Domaines Ott*, Château Pichon Longueville Comtesse de Lalande, Delas Frères, Ramos Pinto), in California (Domaine Anderson, Roederer Estate) and, of course, in the Champagne region where Louis Roederer owns the largest surface area of organically-certified vineyards. Our objective is to obtain grapes of the highest possible quality and this objective is also attested to by our **High Environmental Value** certification in France (Champagne Louis Roederer, Champagne Deutz,

Château Pichon Longueville Comtesse de Lalande, Château de Pez) as well as the **Viticulture Durable en Champagne (Sustainable Viticulture in Champagne)** certification. Accreditation from the **California Certified Organic Farmers** organisation has been attributed to the majority of the vineyards at Domaine Anderson and a proportion of those on the Roederer Estate. The Roederer Group is also pursuing **Demeter** certification for Champagne Louis Roederer and Domaine Anderson. This international certification was established in the 1930s and has been awarded to farmers and winegrowers who adhere to biodynamic growing practices in over 60 countries around the world.

This preoccupation with the impact of human activity on a terroir's ecosystem is also reflected in the design, construction and management of our facilities and premises taking a long-term perspective. For example, in 2020, the architect of the new Delas Frères facilities in Tain l'Hermitage received the **Architecture Firm of the Year** award. This property has been fully restored and turned



into a hospitality venue complete with 11 bedrooms, a visitors reception area and fabulous new cellars. In the same year, the Bordeaux négociant Maison Descaves was certified as an **organic distributor** by Ecocert for its compliance with international standards relating to its management, storage and distribution methods.

ACTING FOR THE FUTURE OF SOCIETY AND CULTURE

Within France, our commitment is based on the promotion of an outstanding savoir-faire that has seen Louis Roederer being named a Living Heritage Company (Entreprise du Patrimoine Vivant). Since 2017, Louis Roederer has therefore been included in a very select group of French companies that use outstanding artisanal and industrial savoir-faire with a strong focus on learning and apprenticeship.



Working towards a better future also involves the advocacy of equality and inclusion through our collaborations with various international associations (Wine Unify, Dress for Success, Grapes for Humanity Global Foundation, The Drinks Trust, Fondation OneDrop, Fondation Bergonié, Académie Younus), and support for ethnic diversity within the production, sale and marketing of wine thanks to initiatives undertaken in conjunction with Black Wine Professionals in the United States and BAME (Black, Asian Minority Ethnic) in the United Kingdom.

Through the Louis Roederer Foundation,

the Roederer Collection enjoys partnerships with several major international cultural institutions (The Grand Palais in Paris and the Bibliothèque nationale de France) and events (Les Rencontres d'Arles, the Semaine de la critique at the Festival de Cannes and the Deauville American Film Festival).

The Roederer Collection also plays an active role as patron of some iconic institutions (MMD USA with MoMa New York, MMD UK with the Royal Academy of Arts in London as well as the Maeght Foundation in Provence through Domaines Ott* and Champagne Louis Roederer).

ROEDERERCOLLECTION

2023 EDITION

PHOTO CREDITS

@Stanislas Desjeux @Enzo Orlando @Eric Zéziola @Michel Jolyot
@Emmanuel & Quentin @Hervé Fabre @Brendan Mcguigan @Costamendes

Alcohol abuse is dangerous for your health and should be consumed in moderation.